



XConsole GUI setup communication manual September 2010.

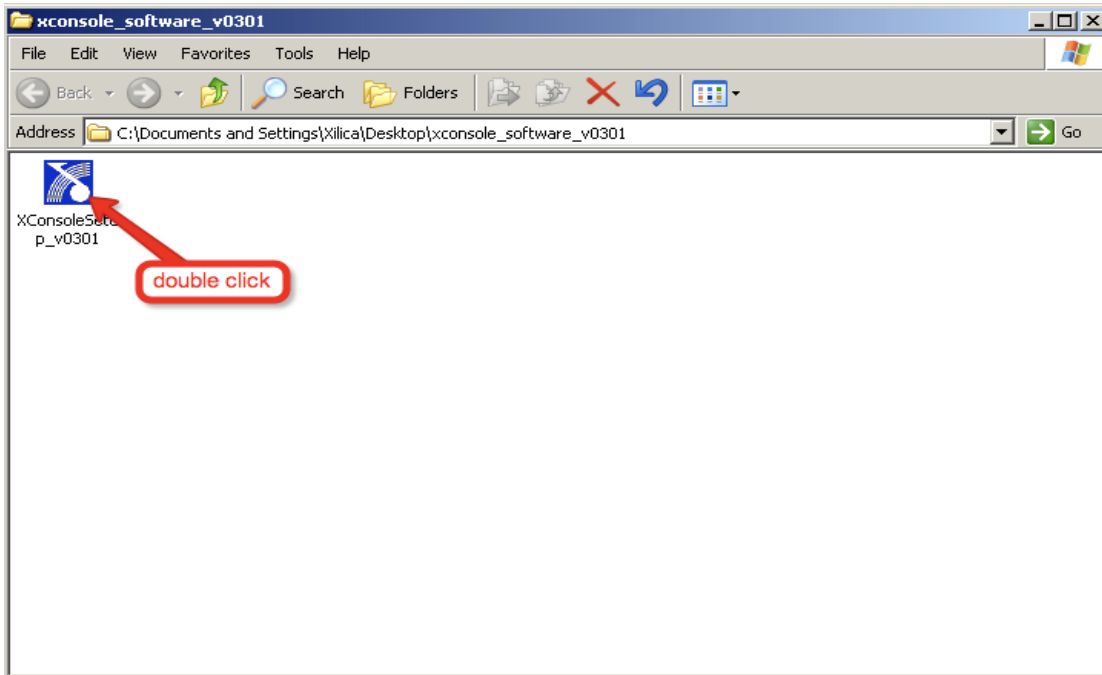
XConsole is compatible with Microsoft XP, Vista and Windows 7.
The software will also work if using Boot camp on a Mac.

IMPORTANT NOTES:

- Do NOT connect your processor with the computer before installing the software.
- Before you run the software on your computer, visit the download tab of www.xilica.com to check for the latest update.
All the other latest components required by the installation can also be found there.
- Ensure you're using the latest version of XConsole, currently version V9.02
- If downloading from the website, ensure you unzip the folder before commencing installation.

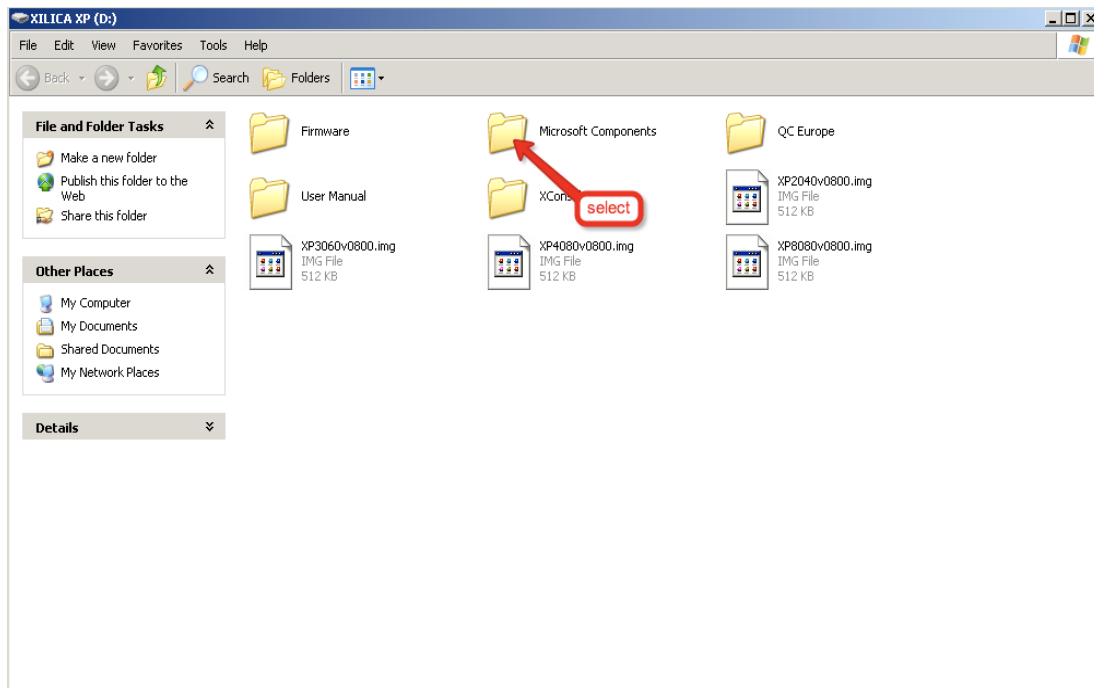
INSTALLATION:

Once the zip file has been extracted, open the folder and double-click “XConsole setup”.

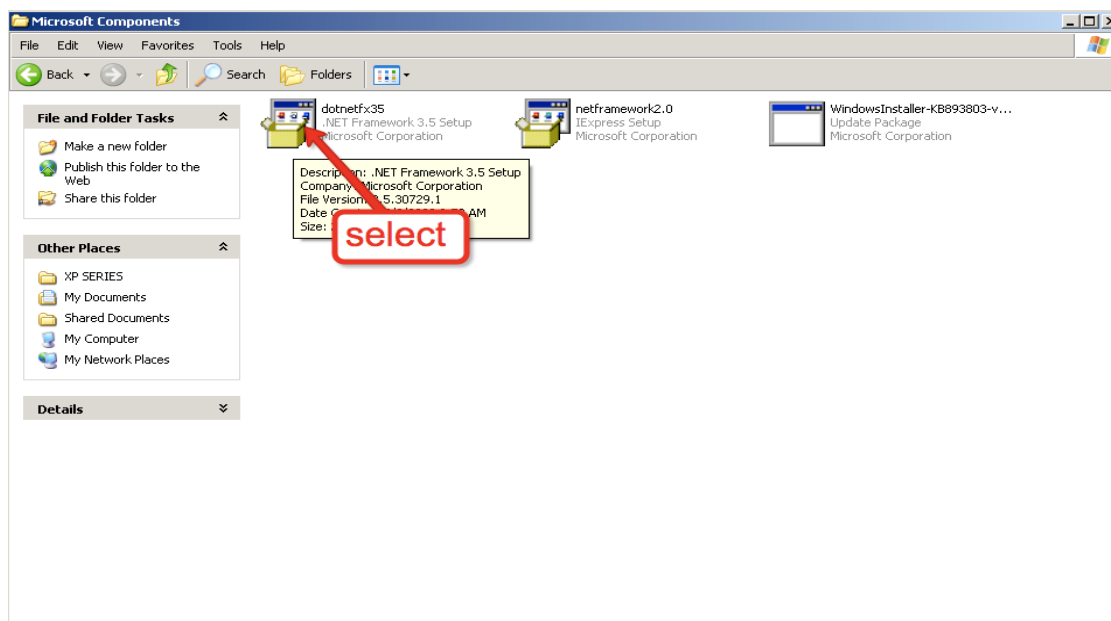


At this point, you might be requested to install the .NET Framework 3.5.
If this happens, please abort the setup.

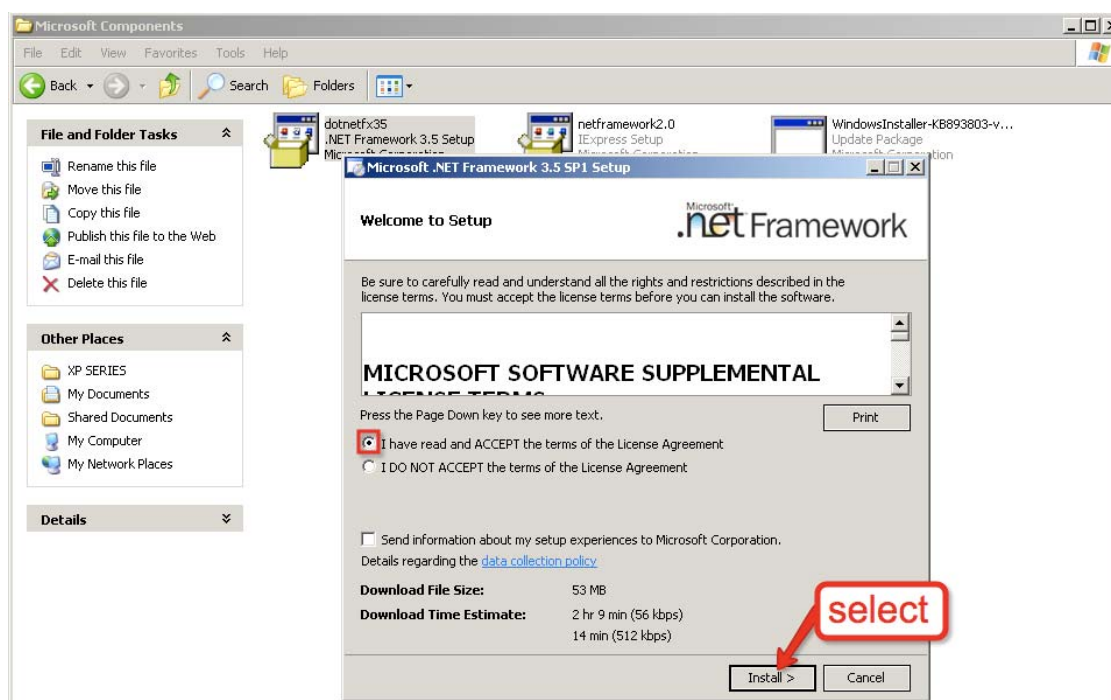
In order to continue, open the folder “Microsoft Components” found on the included USB drive, or return to the download section on the Xilica website.



Navigate to find the required .Net Framework installer and begin the .NET Framework 3.5 installation on your computer by double clicking the file shown below.



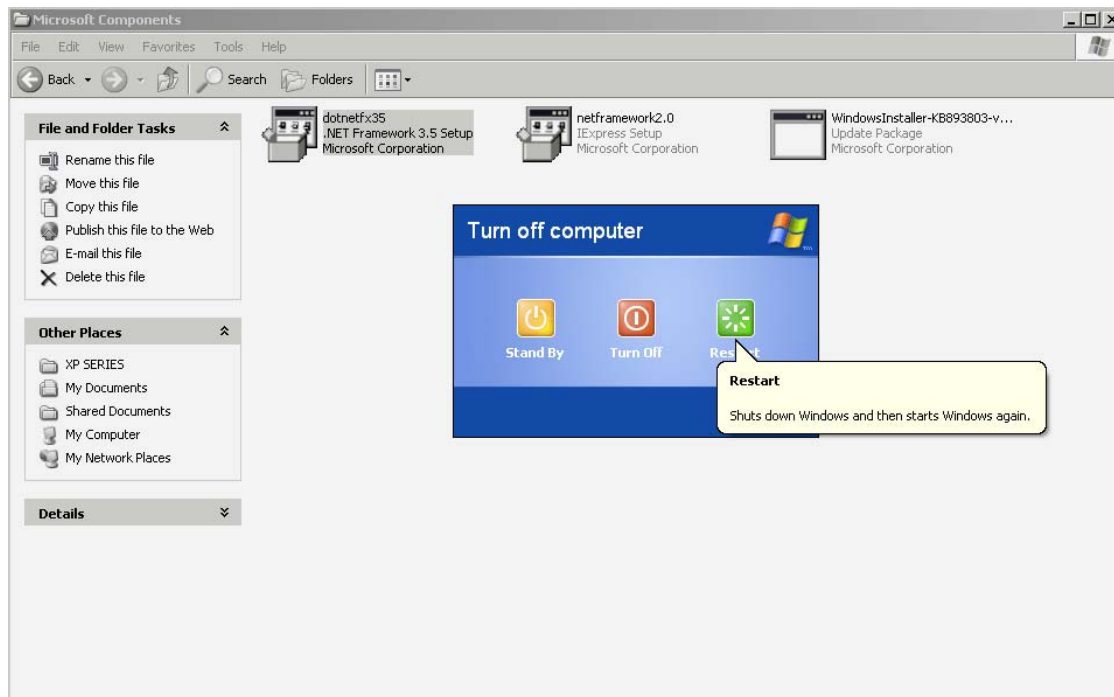
After the initial screen opens, accept the license agreement if shown and click the "Install" button.



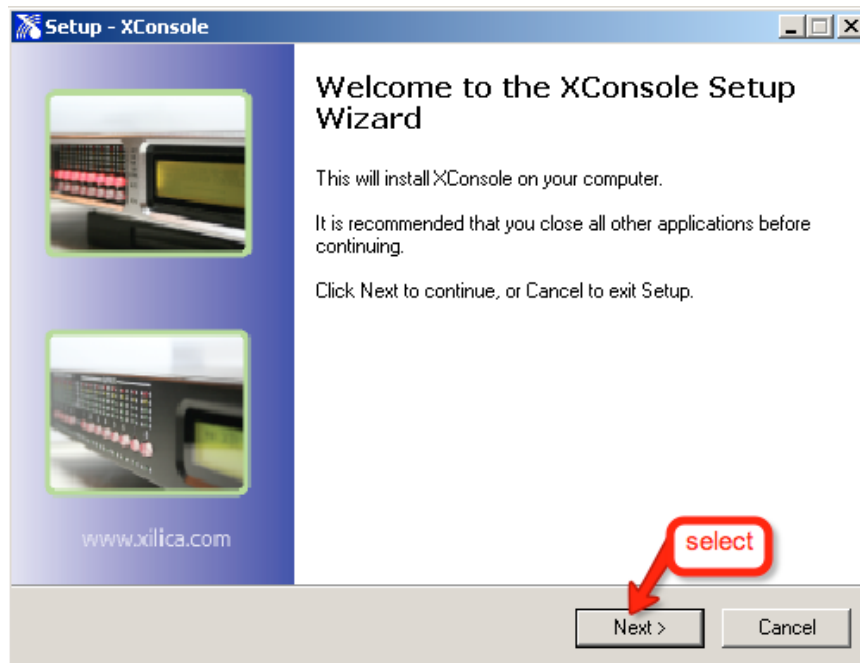
The installation of the .NET Framework 3.5 can take quite some time so please be patient. Do NOT cancel this process.

If you receive any remarks from windows stating an attempt to connect to the Internet, please choose IGNORE as this is an unnecessary step. Windows will eventually complete the installation.

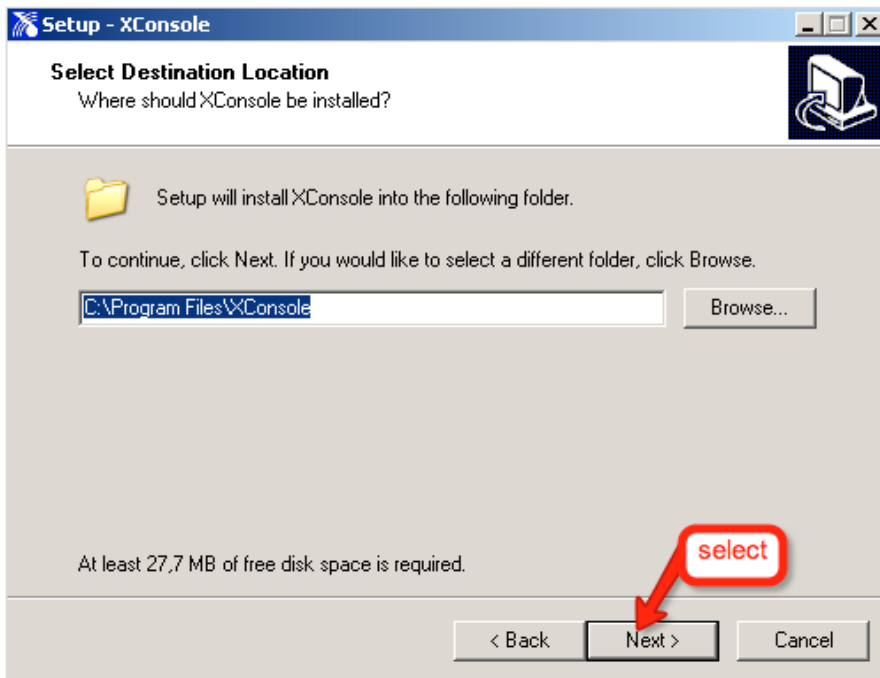
After a successful installation, please finish by clicking “Exit”.
Now please reboot your computer to activate the new settings.



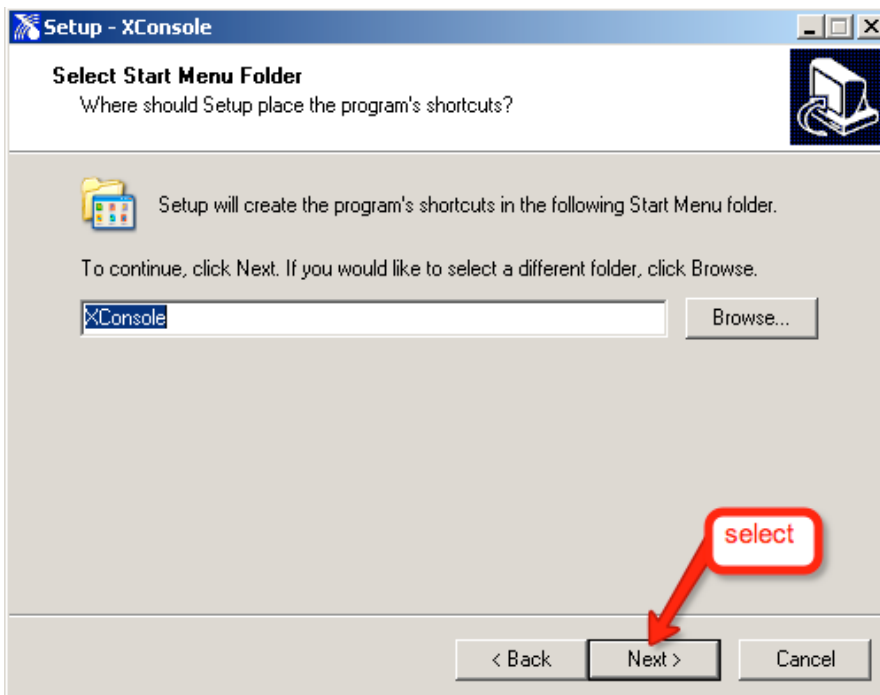
Once the computer has rebooted, please restart the XConsole setup to restart the wizard.
Click on “Next” to proceed with the installation.



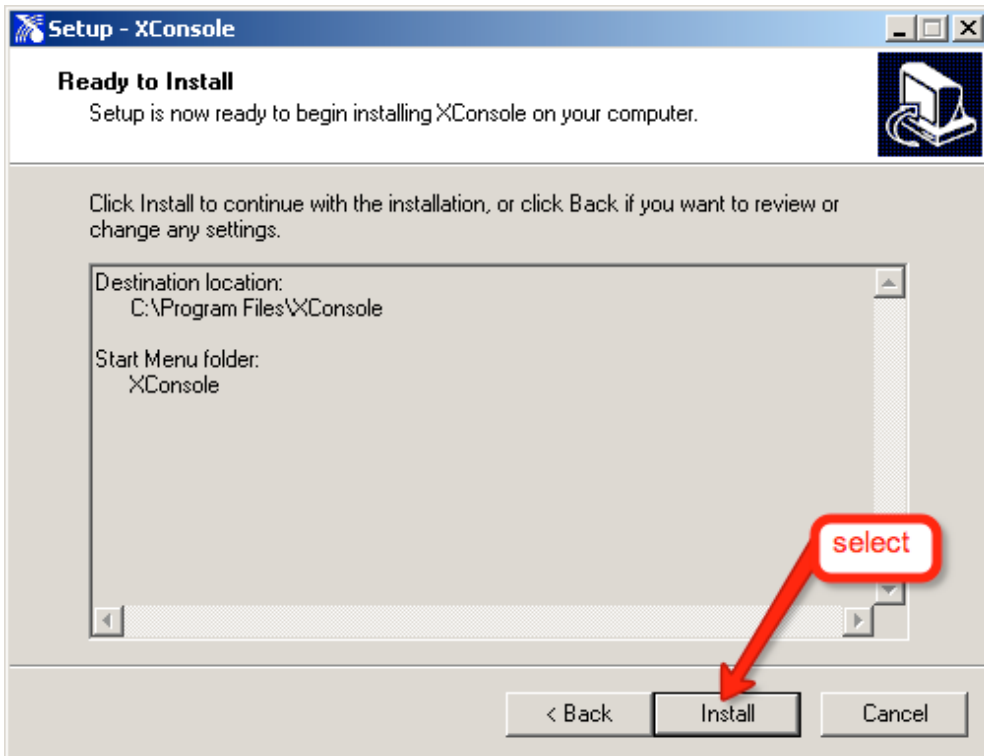
A popup window appears giving you the option to change the Installation folder.
To proceed, click “Next”.



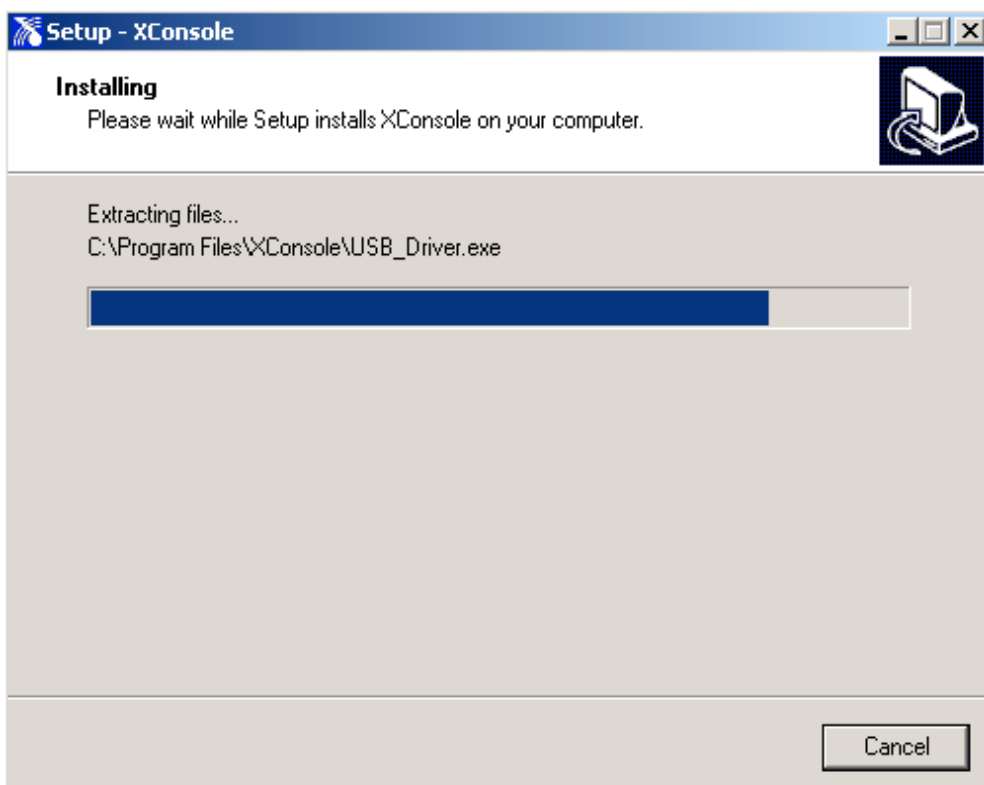
Another pop-up appears prompting You where to install the shortcut. To proceed, click “Next”.



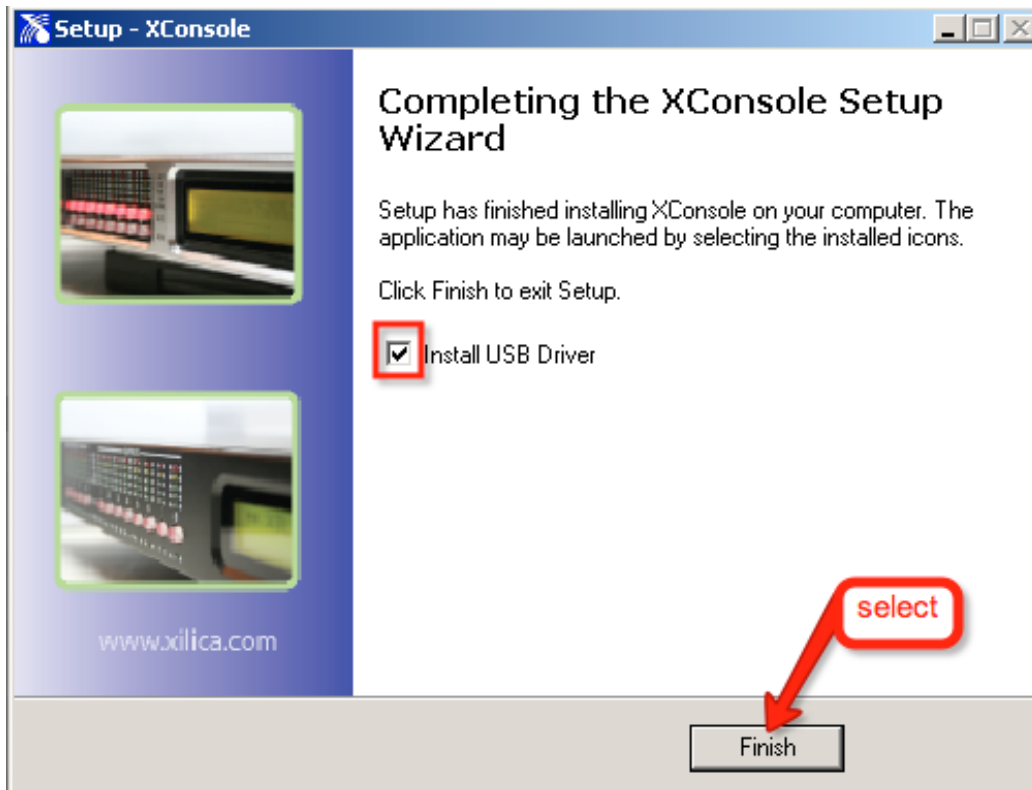
The following pop-up appears select “Install” to proceed with the installation.



The installation starts indicated by a dark blue progress bar.



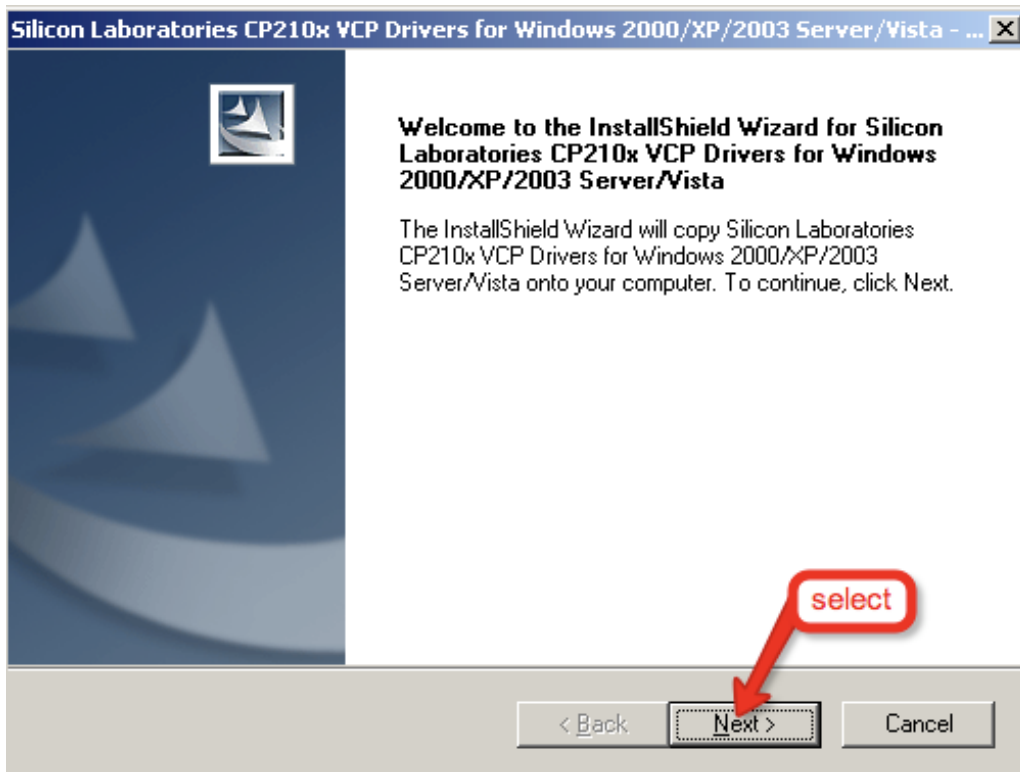
Click “Finish” to start the driver installation procedure.
This will enable the install wizard to successfully copy the relevant USB driver.
Make sure the “Install USB driver” is checked.



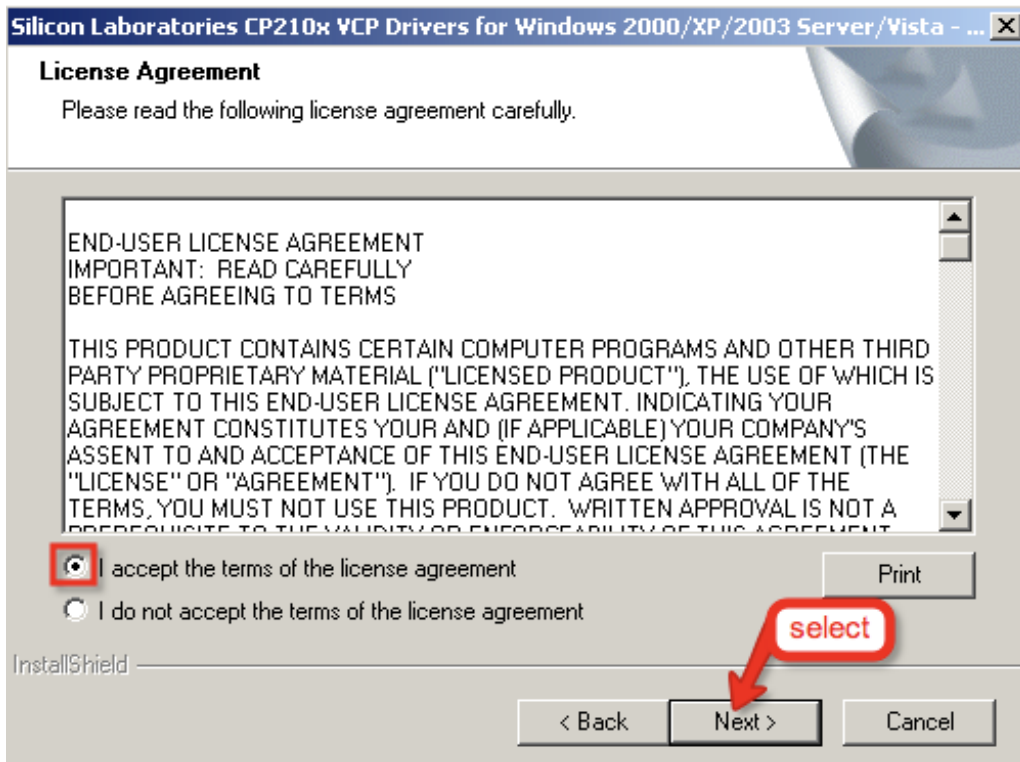
The computer starts searching for previous installed drivers and comes up with the following screen during it's search.



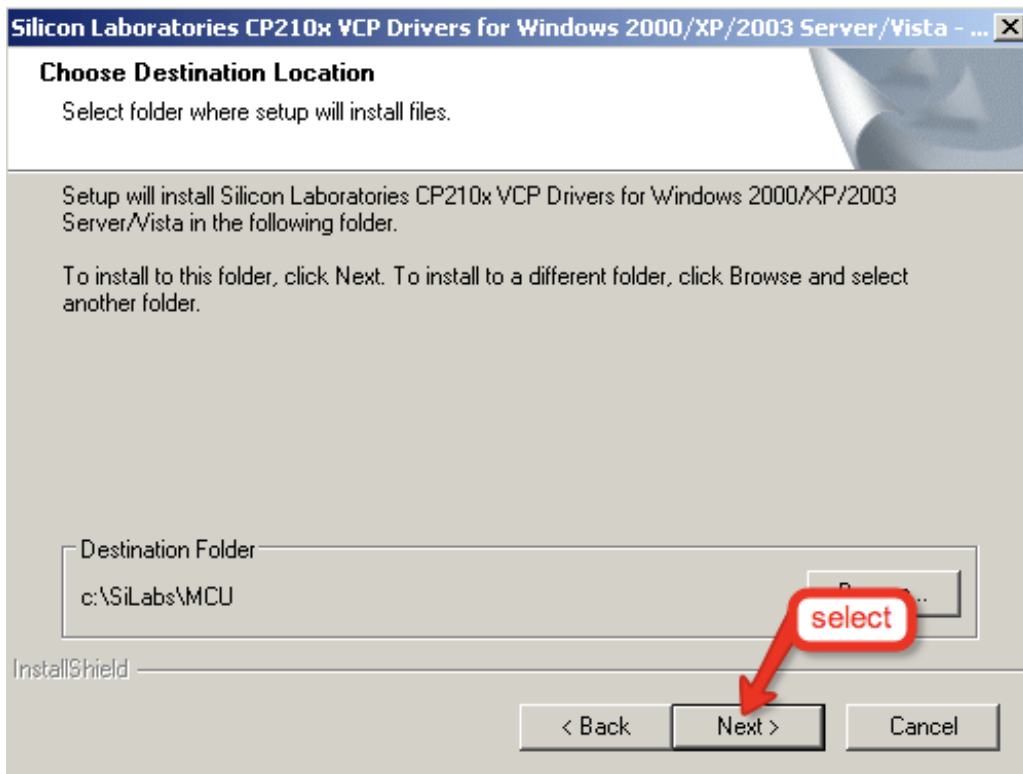
If this is the first time You are installing XConsole and have never used any Xilica products before the installation screens will proceed as follows. Select "Next" to proceed.



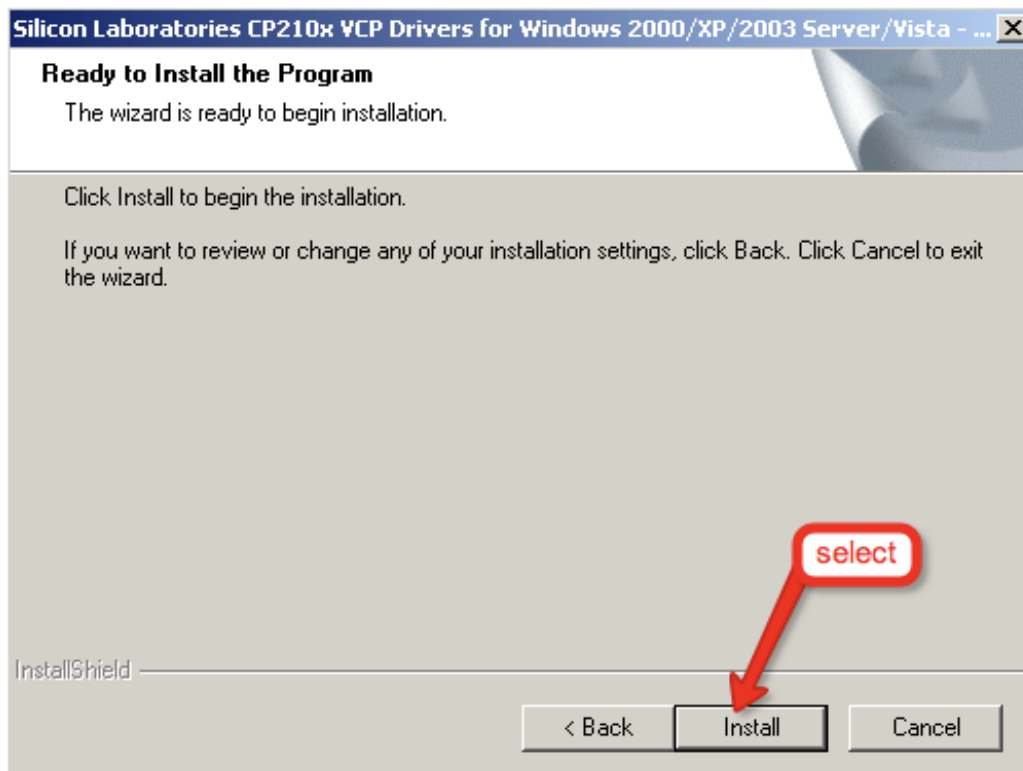
Accept the license agreement to proceed with the installation.



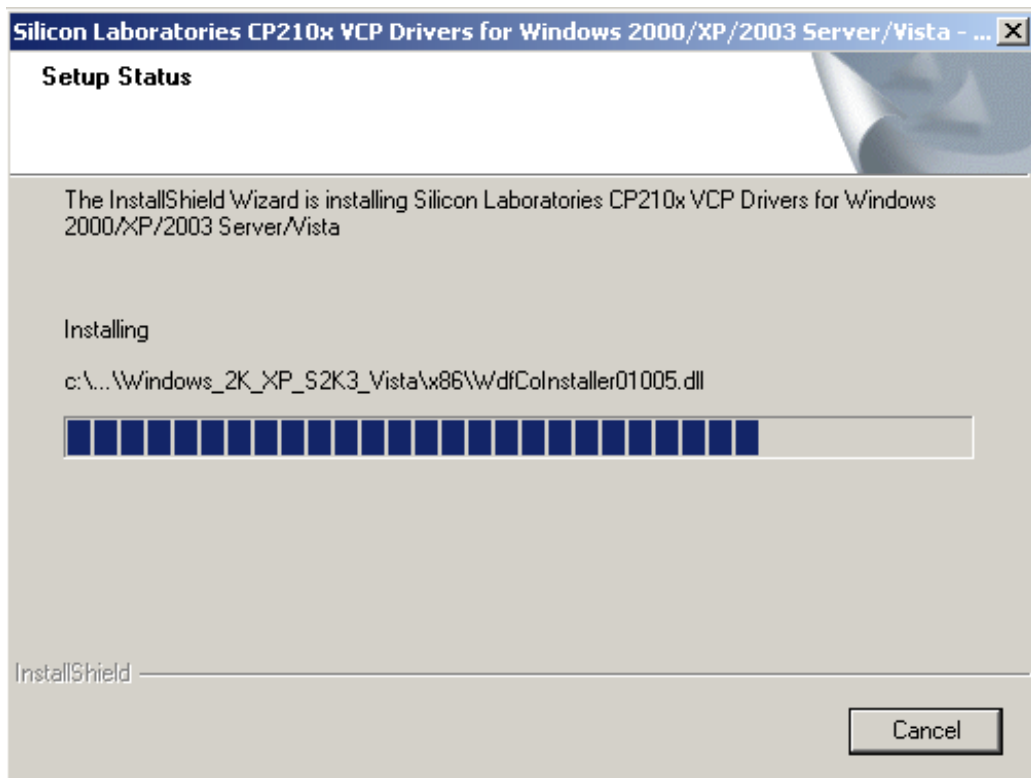
You are now prompted where to install the software and drivers. Proceed by clicking "Next".



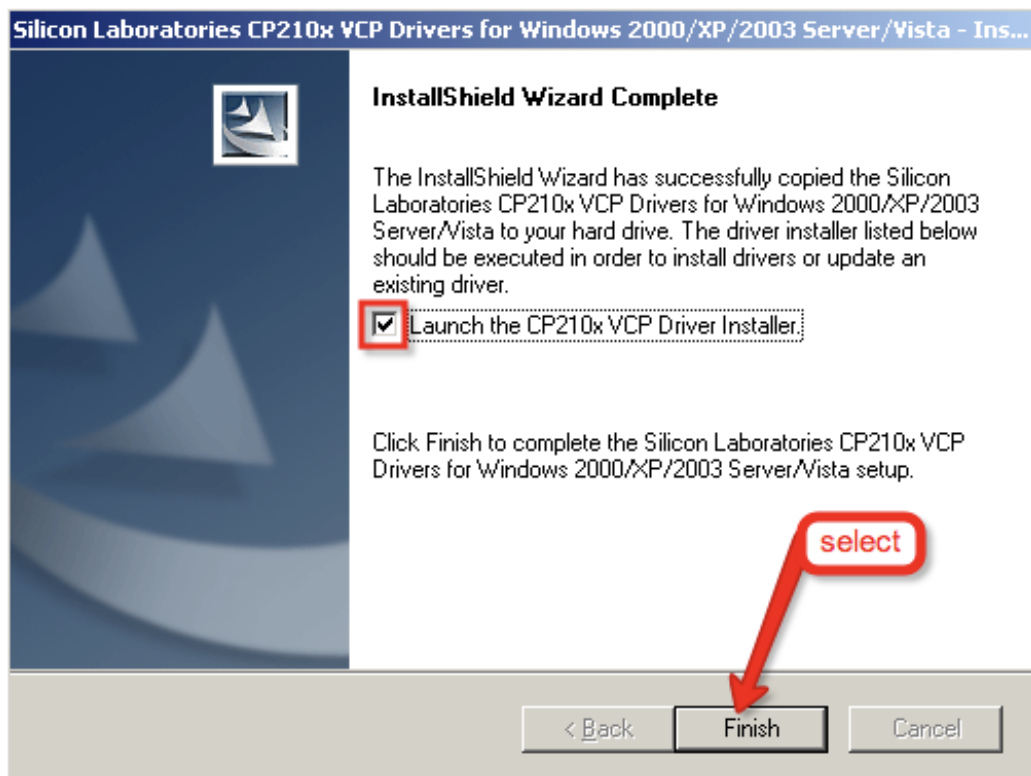
The wizard is ready for installation select “Install” to continue.



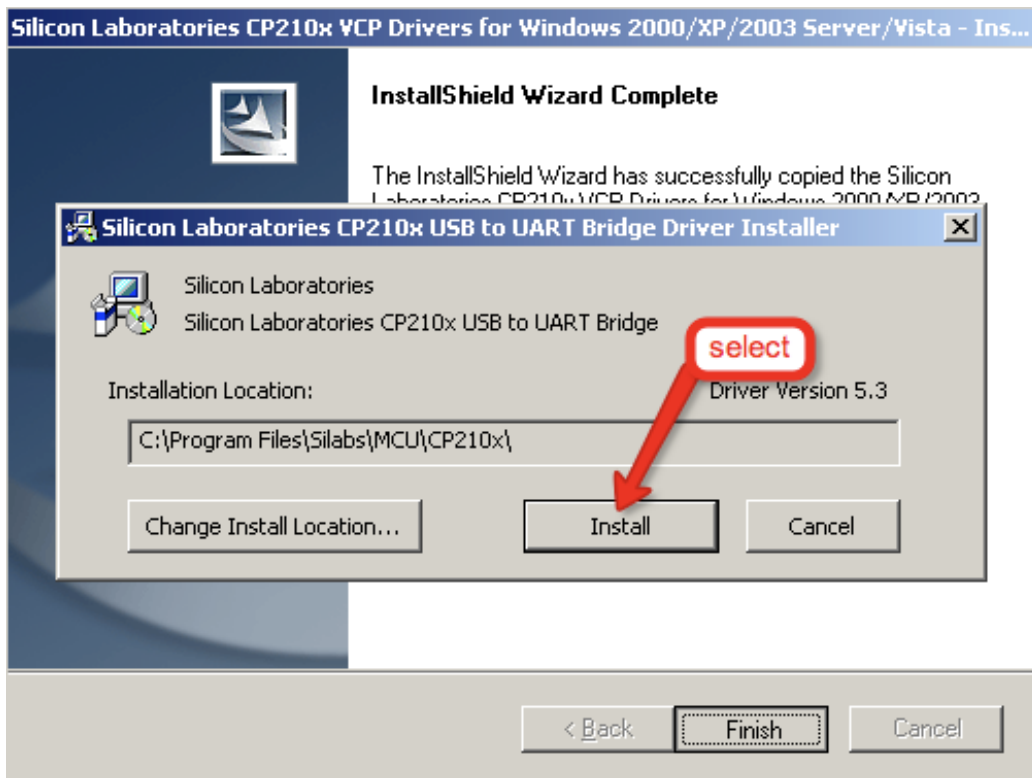
The installation starts indicated by a progress bar.



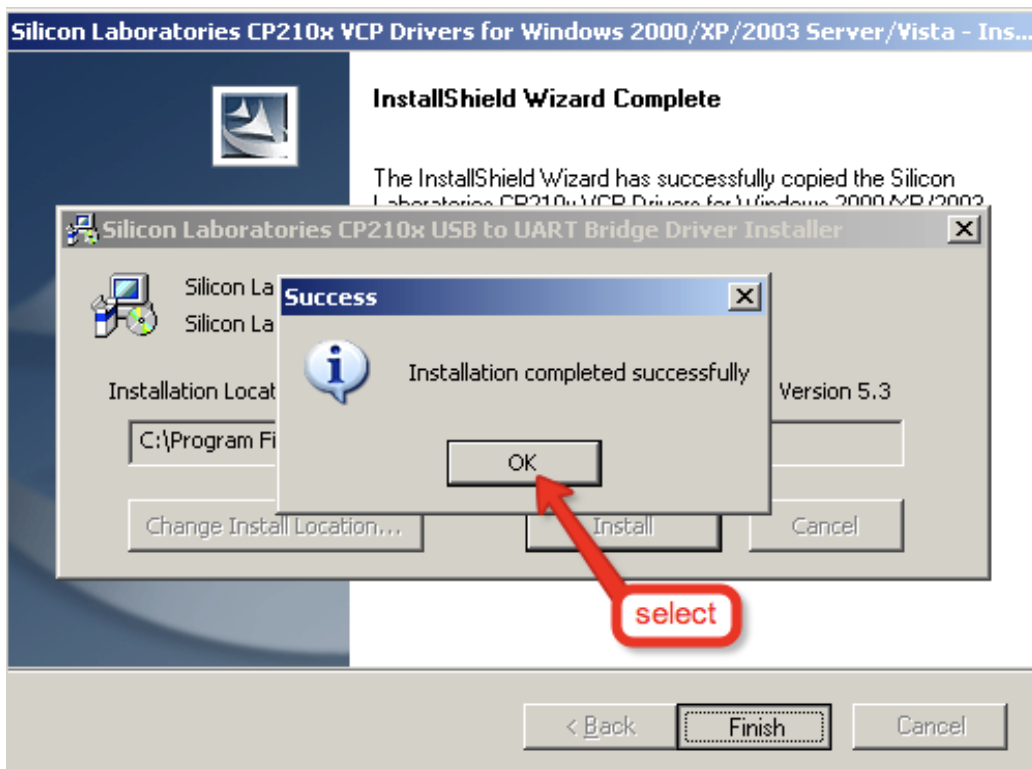
Make sure the “Launch the CP210x...” box is checked before proceeding by clicking “Finish”.



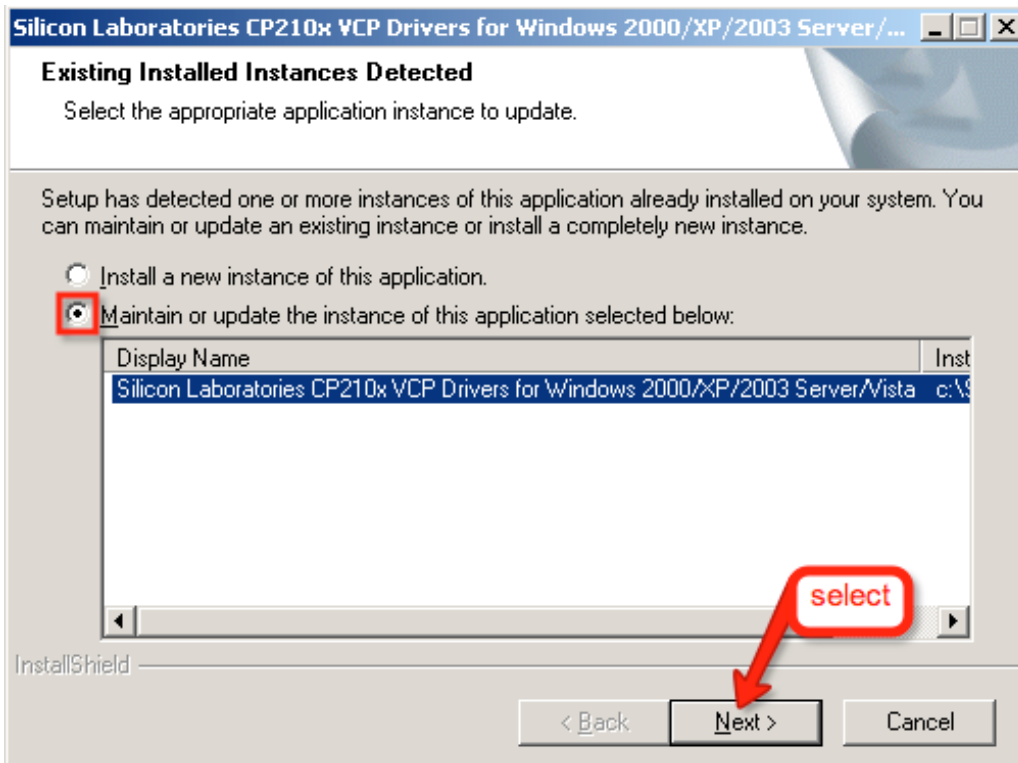
You are now prompted if You would like to change the location of the driver to be installed, simply click “Install” to proceed.



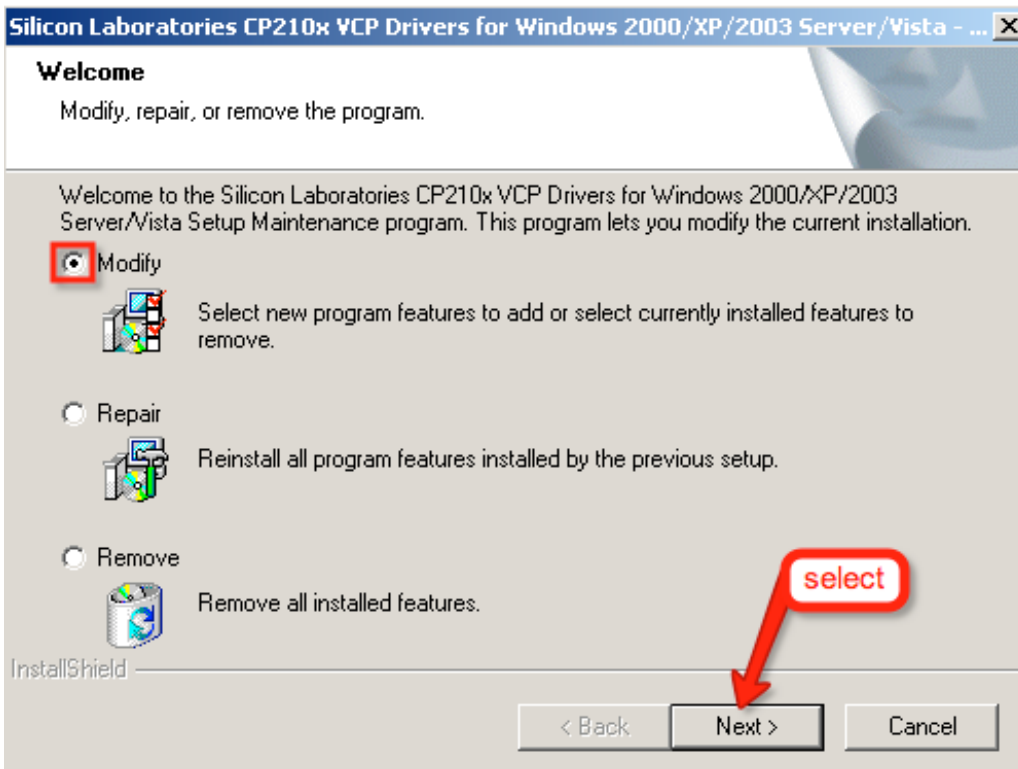
The installation is complete, click “OK” to close the XConsole wizard.



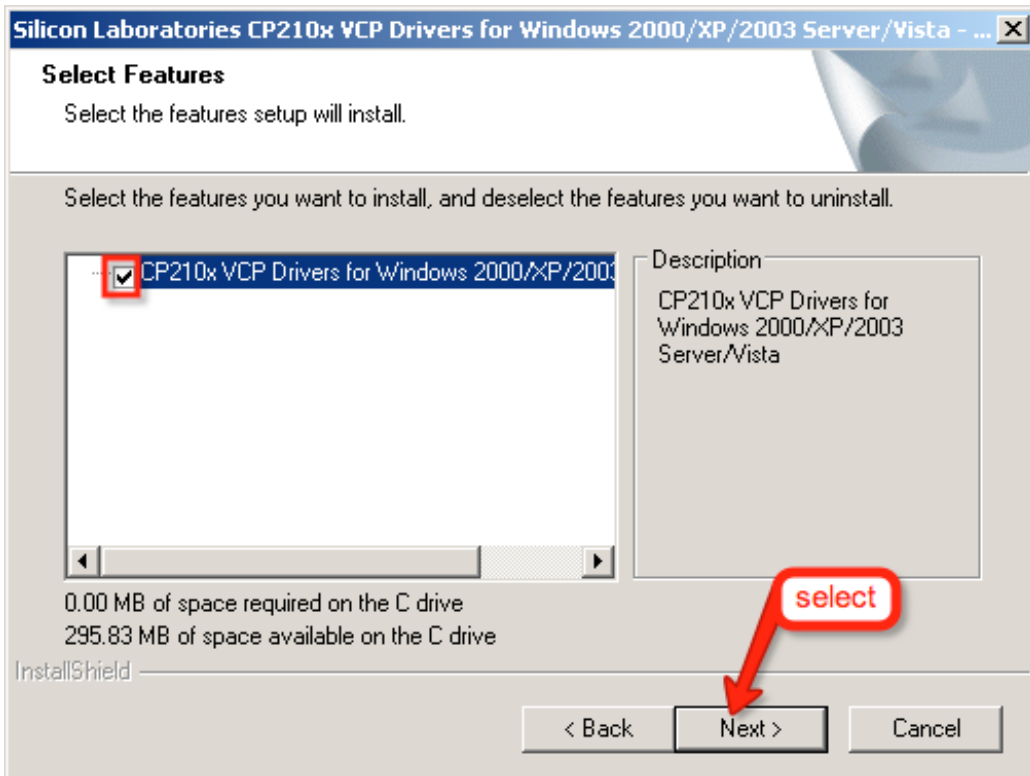
When upgrading from a previous version, the installation wizard will detect a previous driver and the installation screens will proceed as follows. Select “maintain or update...” and click “Next” to proceed with the update.



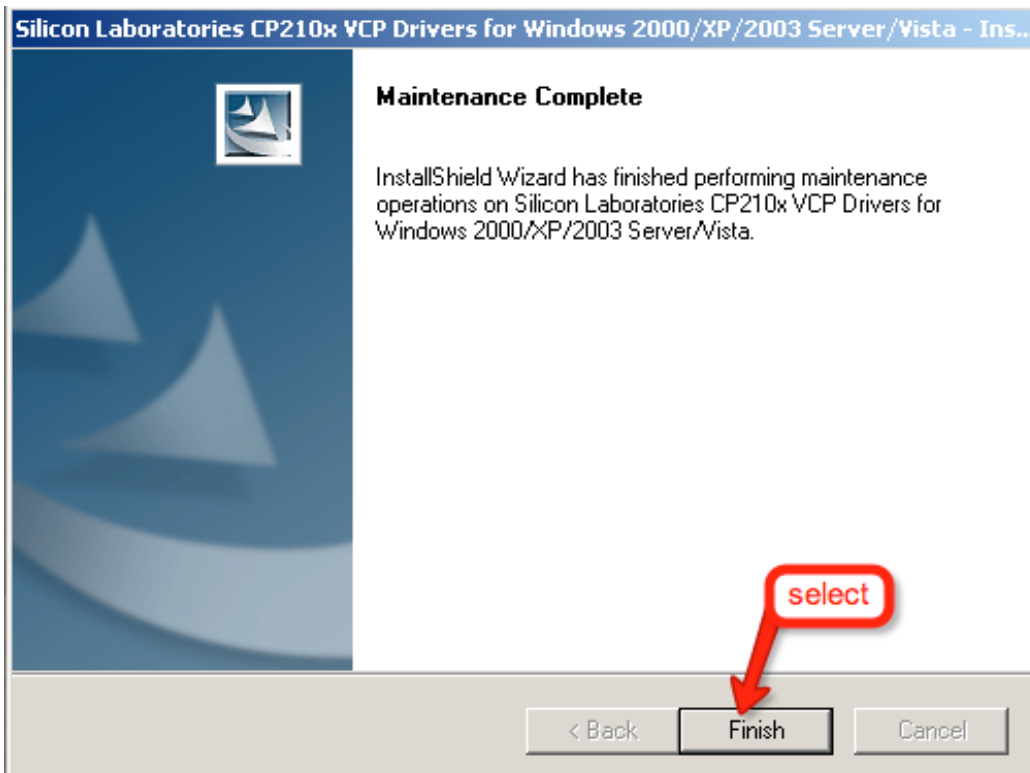
The following pop-up appears select “Modify” and click “Next”



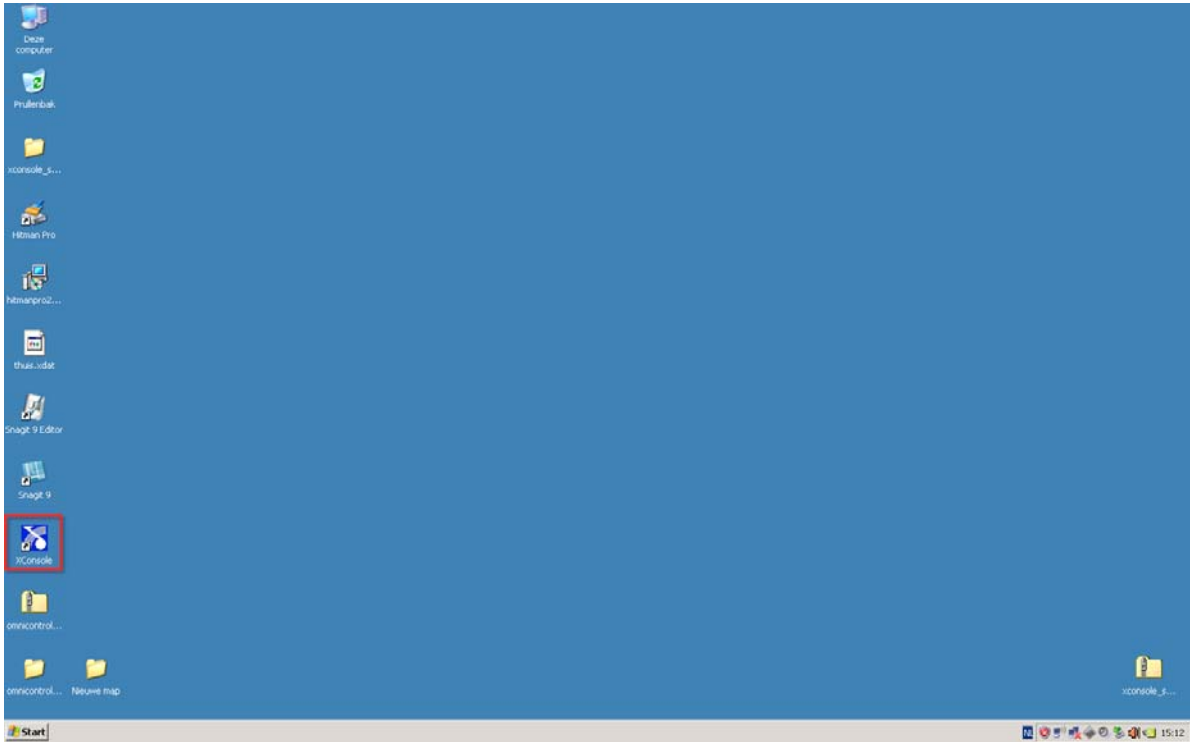
Make sure the box next to “CP210x...” is checked and select “Next” to proceed.



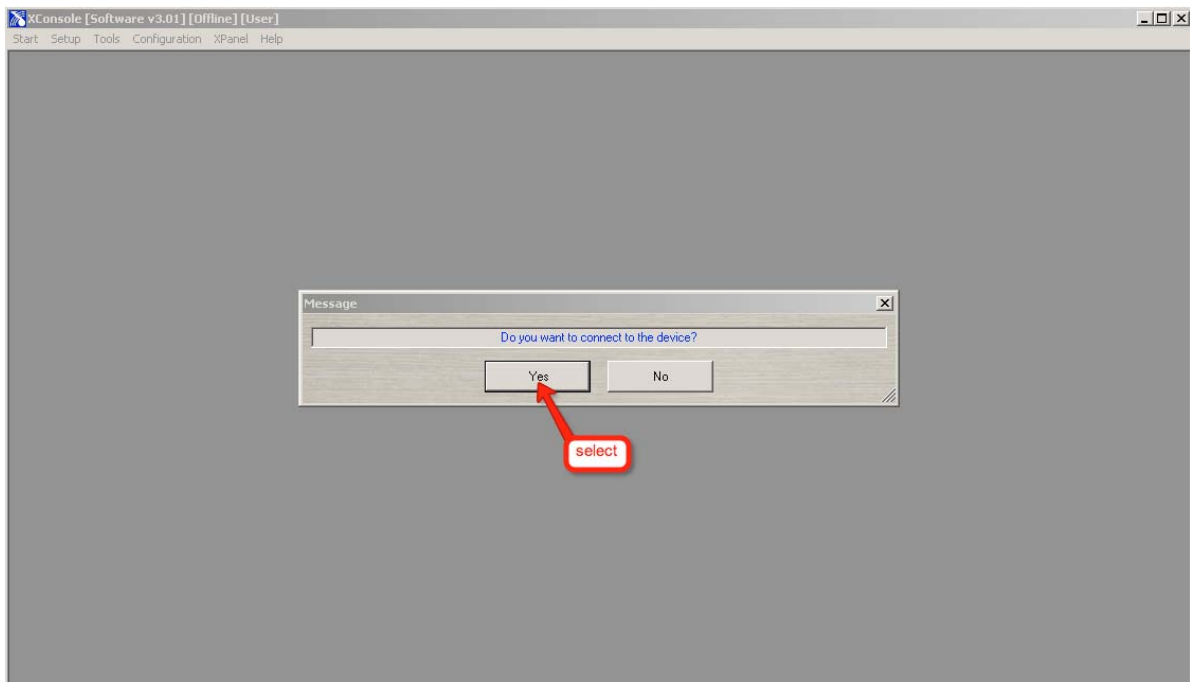
The installation wizard has now finished the update, select “Finish” to complete.



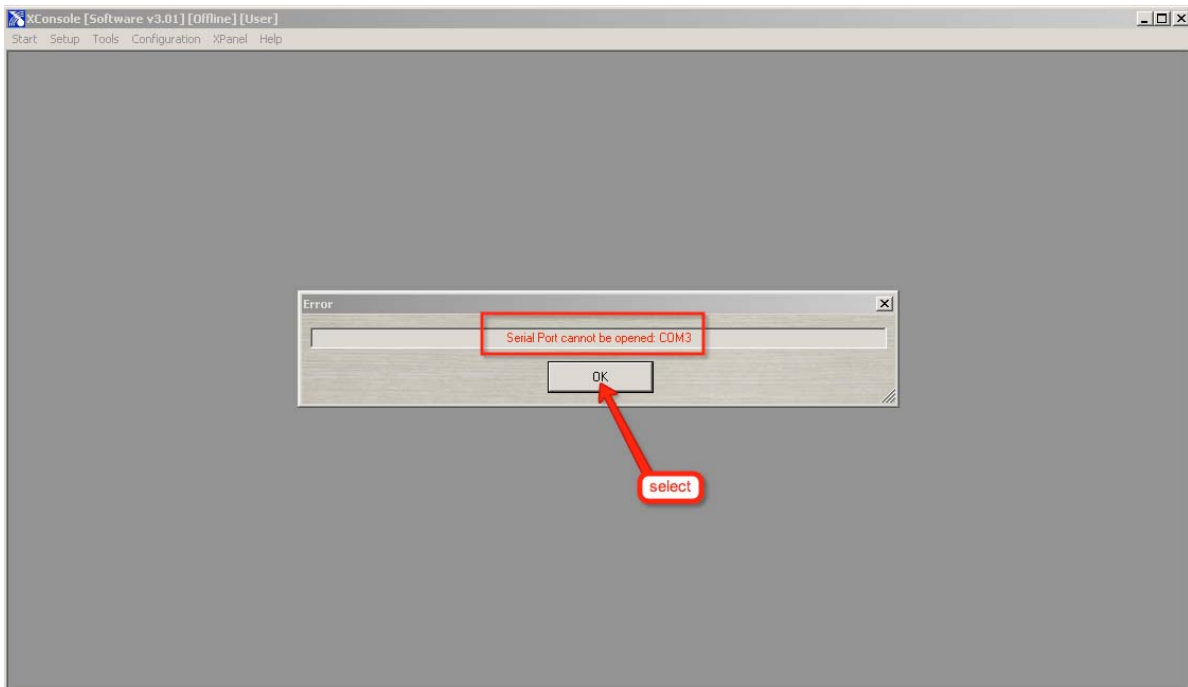
The driver and the software should now be properly installed. We can now start setting up communication between the software and the Xilica processor. On the desktop you will find a shortcut to XConsole that executes the software. Double click the XConsole icon to start the software.



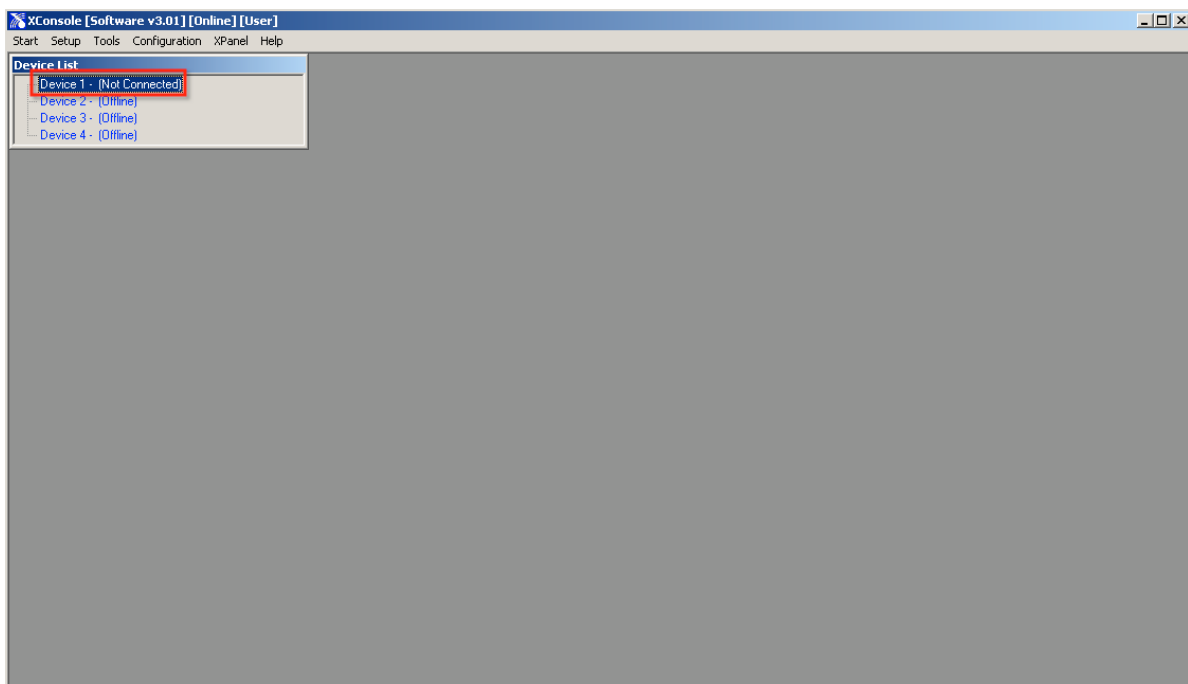
The following screen pops up, prompting You if You would like to connect to the device.



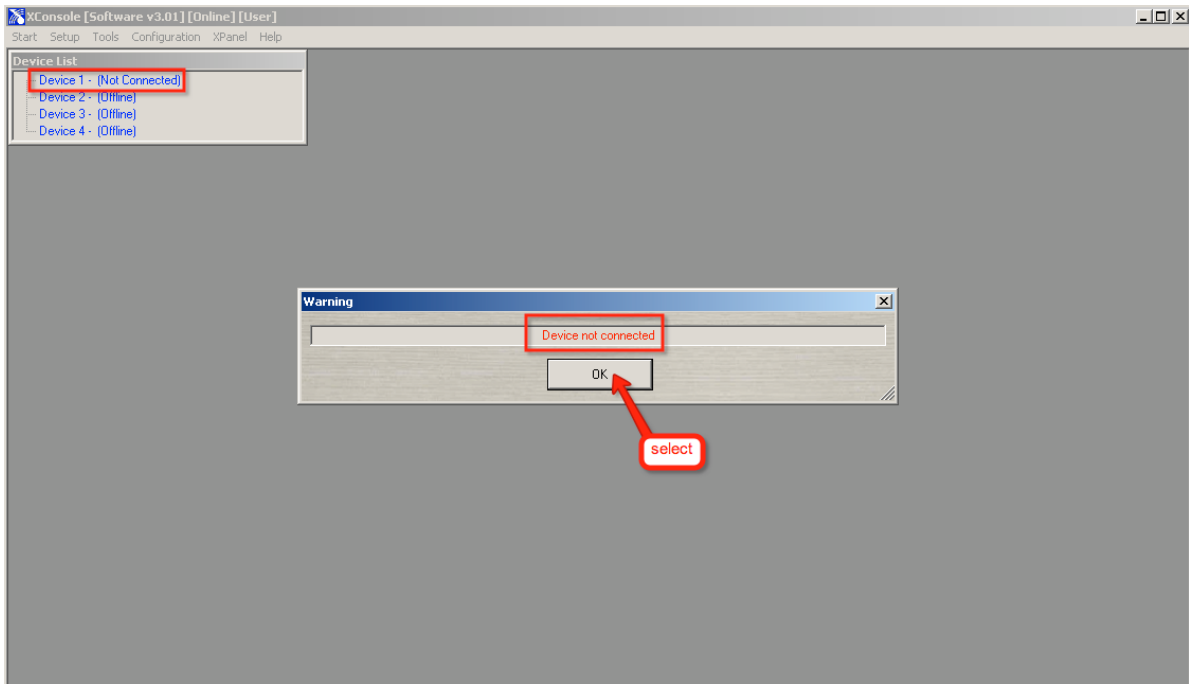
In this example we have deliberately not switched on the device, You get the following message. (see screenshot)



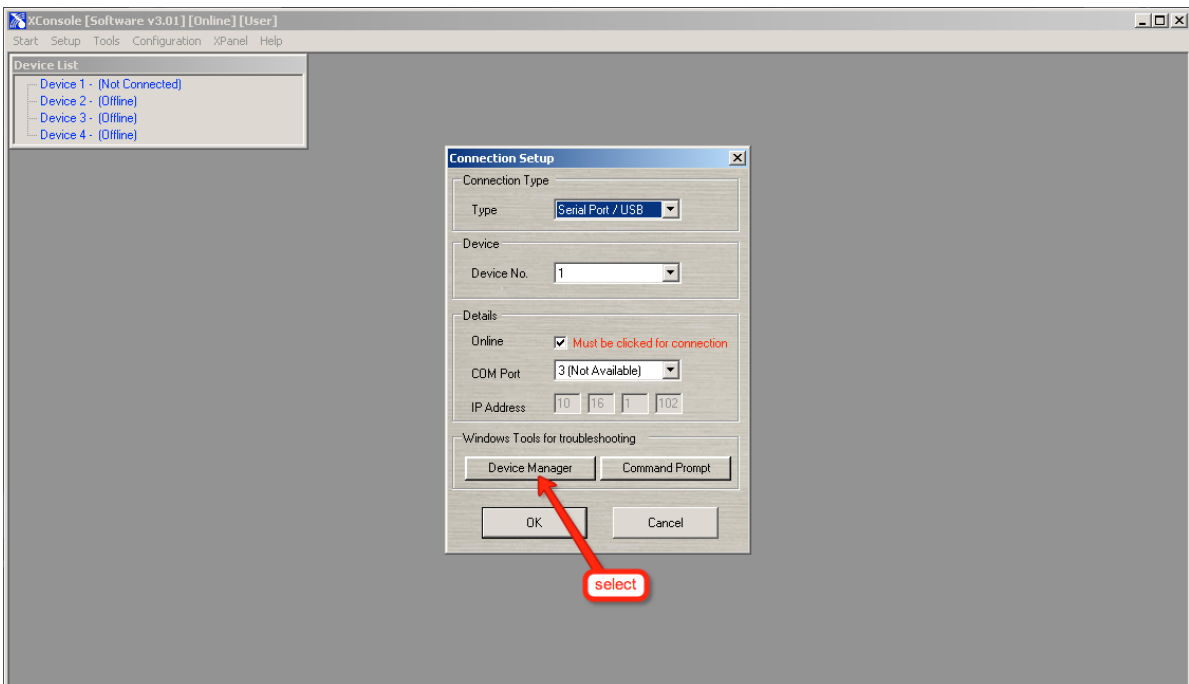
Now the following screen appears, as You can see there is no device connected. Double click to try and connect.



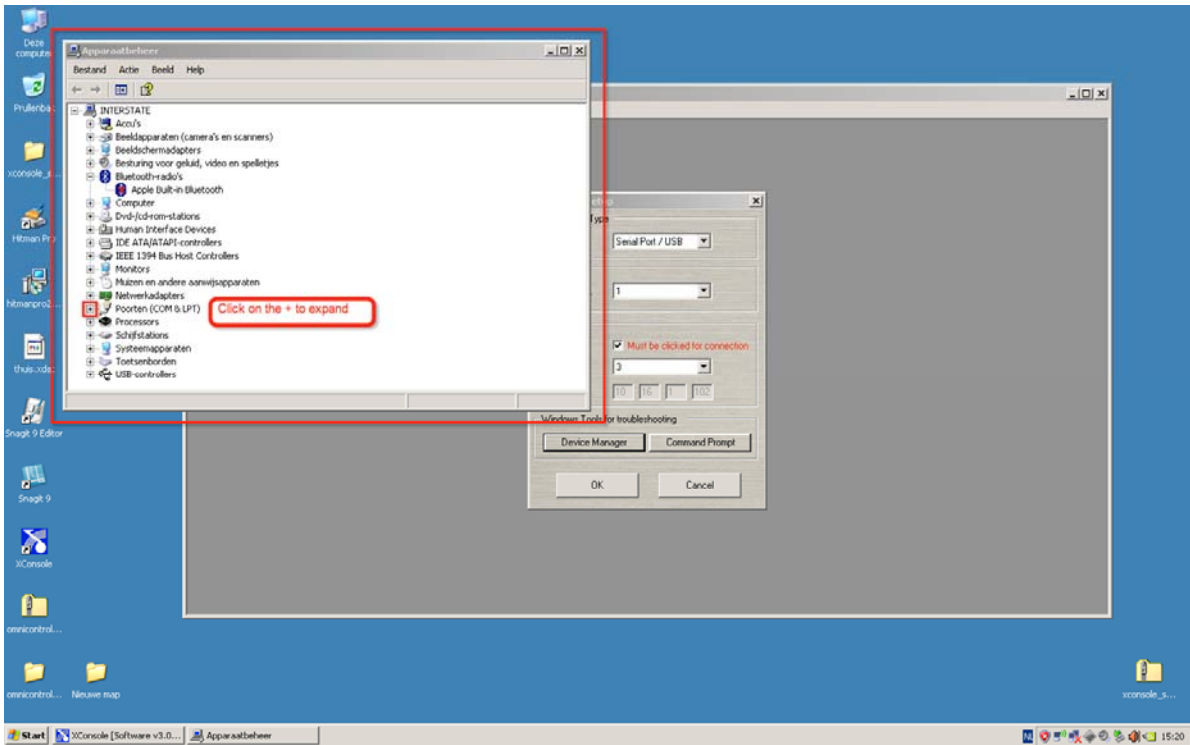
Once again You are now prompted that there is no device connected, proceed by clicking "OK"



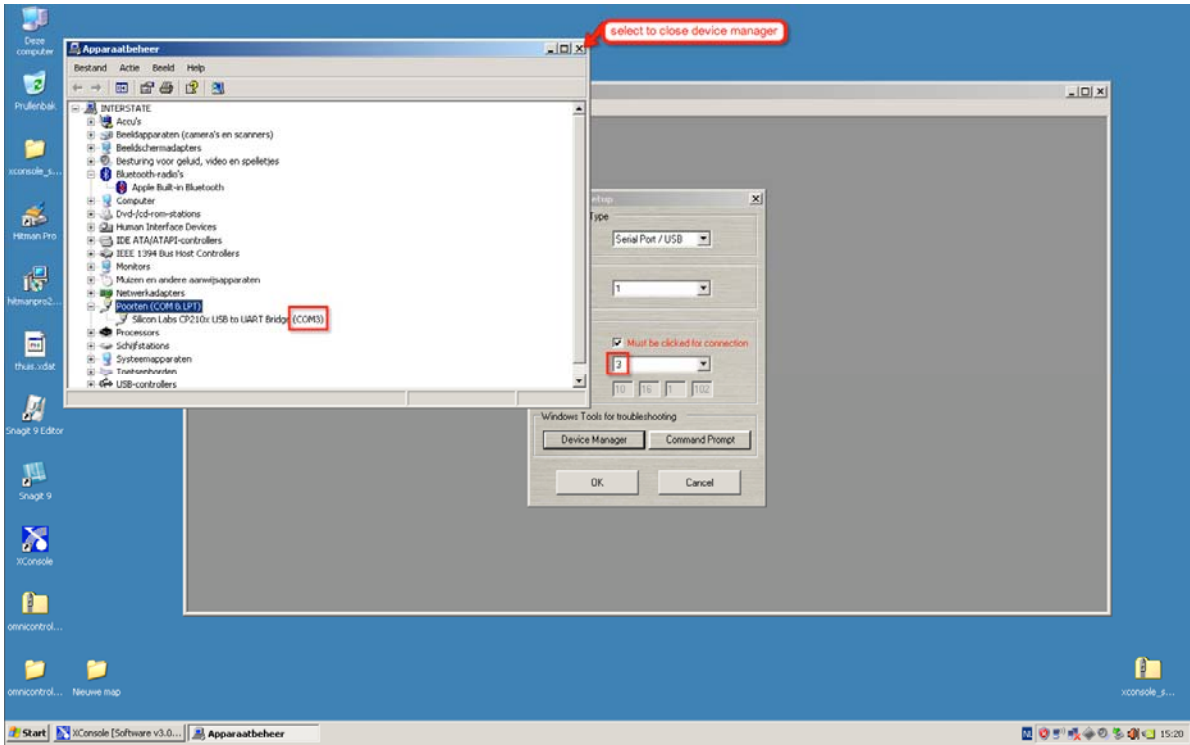
The next screen pops up, as You can see there is a direct link to the device manager in this menu. before opening the device manager we switched on the device, select the device manager by clicking it will now open automatically.



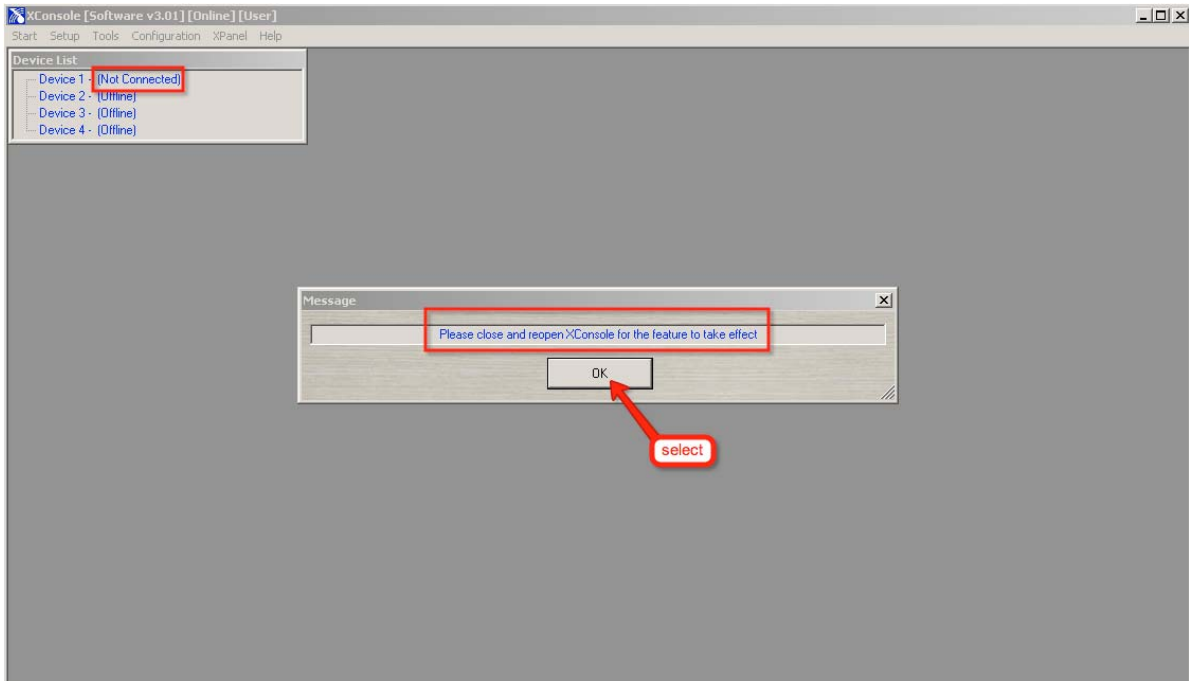
In the device manager You can now see the COM ports, click the + to expand.



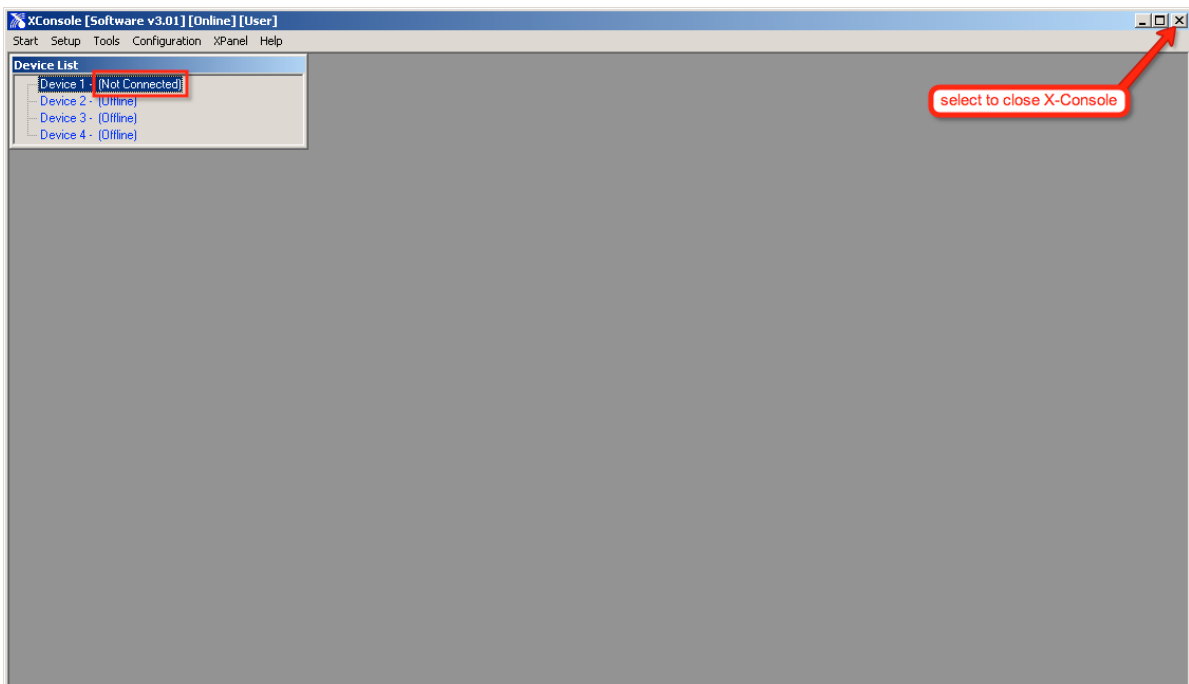
You can now see which COM port is assigned in the device manager (in this case COM port 3) make sure this port is also assigned in the XConsole setup, now close the device manager by clicking on the “X” in the upper right corner of the window.



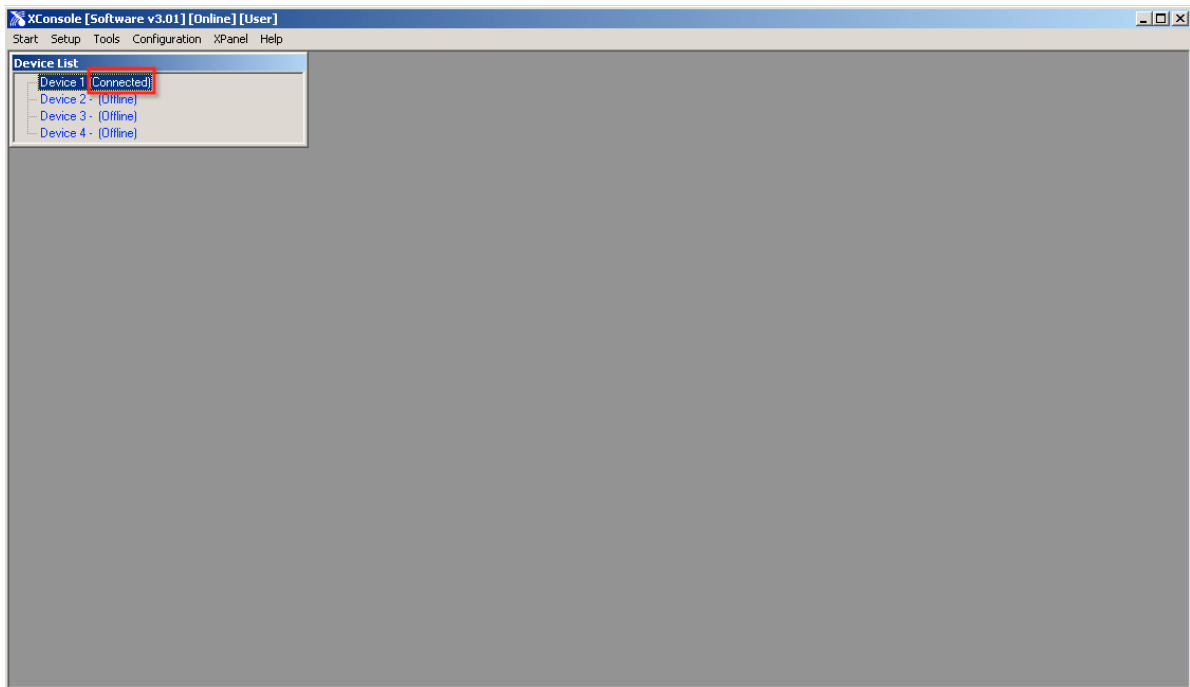
After assigning the right COM port in the XConsole menu, proceed by clicking “OK” The following screen pops up. As You can see there is still no connection and the XConsole prompts You to close and reopen the software for the new settings to take effect.



After clicking “OK” close the software with the “X” in the upper right corner of the window



Now reopen the XConsole You will see the device is connected properly.



XConsole and the related USB driver are installed and you should have established solid communication using the front panel USB connector.